



MORGAN ASSOCIATES

ESTATE & LETTINGS AGENCY

3, Oriel Villas,  
Cheltenham GL50 1XN  
£1,295 PCM



2



2



1



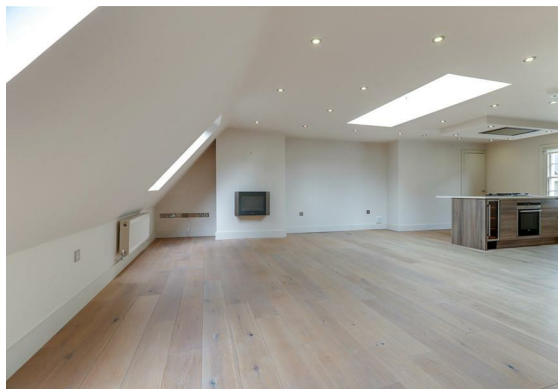
E



### 3, Oriel Villas,

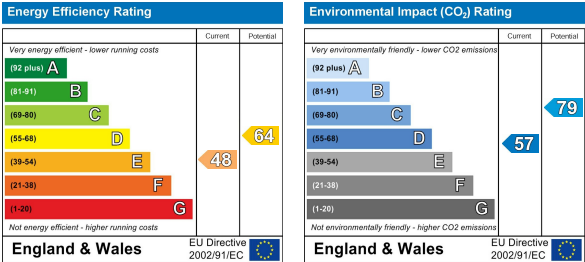
#### Cheltenham GL50 1XN

An elegant, two bedroom, unfurnished penthouse apartment in an exclusive development located just a short stroll from Imperial Gardens and fashionable Montpellier. The property is presented to the highest standards, combining period features with contemporary finishing and benefits externally from gated off road parking. Internally the property is offered on an unfurnished basis with open plan sitting room into a sleek fitted kitchen with dining, two double bedrooms and a stylish shower room. The property is warmed throughout by gas central heating.



Floor Plan

Energy Efficiency Graph



Area Map



Viewing

Please contact us on 01242 514 285 if you wish to arrange a viewing appointment for this property or require further information.

Rotunda Buildings Montpellier Exchange  
Cheltenham  
Gloucestershire  
GL50 1SJ

T. 01242 514 285  
E. [info@morgan-associates.co.uk](mailto:info@morgan-associates.co.uk)  
W. [www.morgan-associates.co.uk](http://www.morgan-associates.co.uk)

These particulars, whilst believed to be accurate are set out as a general outline only for guidance and do not constitute any part of an offer or contract. Intending purchasers should not rely on them as statements of representation of fact, but must satisfy themselves by inspection or otherwise as to their accuracy. No person in this firm's employment has the authority to make or give any representation or warranty in respect of the property.

